



SAILING INSTRUCTIONS

International Dragon Class

GRAND PRIX d'AALSMEER 2021

Organising Authority:
Westeinder Zeilwedstrijden (WZW)
in association with Yachtclub Aalsmeer and the Dutch Dragon Association

1 RULES

- 1.1 The event will be governed by the rules as defined in the *Racing Rules of Sailing*.
- 1.2 All participants and support persons shall adhere to the coronarules from the Dutch Government. (<https://www.government.nl/topics/coronavirus-covid-19>)

2 CHANGES TO SAILING INSTRUCTIONS

- 2.1 Any change to the sailing instructions (SI) will be posted before 0900 on the day it will take effect, except that any change to the schedule of races will be posted by 2000 on the day before it will take effect.


3 COMMUNICATION WITH COMPETITORS

- 3.1 Notices to competitors will be posted on the official notice board located near the race office.
- 3.2 The race office is located at Yachtclub Aalsmeer opposite the clubhouse, telephone +31 6 40243675 (only used during the event), email wedstrijden@westeinderzeilwedstrijden.nl
- 3.3 On the water, the race committee intends to monitor and communicate with competitors on VHF radio channel 72.
- 3.4 [DP] From the first warning signal until the end of the last race of the day, except in an emergency, a boat shall not make voice or data transmissions and shall not receive voice or data communication that is not available to all boats.

4 CODE OF CONDUCT

- 4.1 [DP] Competitors and support persons shall comply with reasonable requests from race officials.
- 4.2 [DP] Competitors and support persons shall handle any equipment provided by the organizing authority with care, seamanship, in accordance with any instructions for its use and without interfering with its functionality.

5 SIGNALS MADE ASHORE

- 5.1 Signals made ashore will be displayed from the flagpole near the race office/clubhouse.
- 5.2 When flag AP  is displayed ashore, "1 minute" is replaced by "not less than 30 minutes" in race signals AP.

6 SCHEDULE OF RACES

Day	Date	First warning signal Soling	First warning signal Dragon	Number of races
Saturday	March 27, 2021	-----	11:55	3
Sunday	March 28, 2021	-----	10:55	3
Saturday	April 3, 2021	-----	11:55	3
Sunday	April 4, 2021	-----	10:55	3
Monday	April 5, 2021	-----	10:55	3
Saturday	April 17, 2021	11:45	11:55	3
Sunday	April 18, 2021	10:45	10:55	3

- 6.2 One extra race per day may be sailed, provided that no class becomes more than one race ahead of schedule. If an extra race is sailed it will be communicated to the boats according SI 3.3.
- 6.3 To alert boats that a race or sequence of races will begin soon, the orange starting line flag will be displayed with one sound at least five minutes before a warning signal is made.
- 6.4 On the last scheduled day of racing no warning signal will be made after 1500.

7 CLASS FLAG

- 7.1 Class flag for the Dragon class is: Yellow flag with "2".
Class flag for the Soling class is: Purple flag with "1".

8 RACING AREAS

- 8.1 The racing area is the "Grote Poel" of the Westeinderplassen. SI Addendum A shows the location of the race area.

9 THE COURSES

- 9.1 The diagrams in SI Addendum B show the courses, including the approximate angles between legs, the order in which marks are to be passed, and the side on which each mark is to be left.
- 9.2 No later than the warning signal, the race committee signal vessel will display the course sign.

10 MARKS

- 10.1 Marks 1, 2S, 2P are orange triangle buoys.
Mark 1A is an orange "skippyball".
- 10.2 New mark 1 and 1A, as provided in SI 13, will be a yellow triangle buoy and a yellow "skippyball".
- 10.3 A race committee boat signalling a change of a leg of the course is a mark as provided in instruction 13.3

11 SPARE

12 THE START

- 12.1 Races will be started using RRS 26 with the warning signal made 5 minutes before the starting signal.
- 12.2 The starting line is between a staff displaying an orange flag on the signal vessel at the starboard end and the course side of the port-end starting mark.
- 12.3 Boats whose warning signal has not been made shall avoid the starting area during the starting sequence for other races.
- 12.4 A boat starting later than 4 minutes after her starting signal will be scored Did Not Start without a hearing. This changes RRS A5.1 and A5.2.

13 CHANGE OF THE NEXT LEG OF THE COURSE

- 13.1 To change the next leg of the course, the race committee will lay a new mark (or move the finishing line) and remove the original mark as soon as practicable. When in a subsequent change a new mark is replaced, it will be replaced by an original mark.
- 13.2 In case of a minor course change, such at the discretion of the Race Committee, no signal will be given because the marks are visible at all times. In this case the marks in use at the time, will not be replaced. This changes RRS 33.
- 13.3 Except at a gate, boats shall pass between the race committee boat signalling the change of the next leg and the nearby mark, leaving the mark to port and the race committee boat to starboard. This changes rule 28.

14 THE FINISH

- 14.1 Course A,B,C: The finishing line is between a staff displaying a blue flag on the finishing mark at the starboard end and the course side of the port end finishing mark.
Course D,E,F: The finishing line is between a staff displaying a blue flag on the finishing mark at the port end and the course side of the port end finishing mark.
- 14.2 If the race committee is absent when a boat finishes, she shall report her finishing time, and her position in relation to nearby boats, to the race committee at the first reasonable opportunity.

15 PENALTY SYSTEM

- 15.1 Rule 44.1 is changed so that the Two-Turns penalty is replaced by the One-Turn penalty.

16 TIME LIMITS AND TARGET TIMES

16.1 The Mark 1 Time Limit, Race Time Limit (see RRS 35), and the Finishing Window are shown in the table below.

Mark 1 time limit	Race time limit	Finishing window
30 minutes	45 minutes	15 minutes

16.2 If no boat has passed the first mark within the Mark 1 Time Limit, the race will be abandoned.

16.3 Failure to meet or exceed the Race Time Time will not be grounds for redress. This changes RRS 62.1(a).

17 HEARING REQUESTS

17.1 For each class, the protest time limit is 60 minutes after the last boat in that class finishes the last race of the day or the race committee signals no more racing today, whichever is later. The time will be posted on the official notice board.

17.2 Hearing request forms are available from the race office.

17.3 Notices will be posted no later than 30 minutes after the protest time limit to inform competitors of hearings in which they are parties or named as witnesses. Hearings will be held in the protest room, located at the race office.

18 SCORING

18.1 One race is required to be completed to constitute a series.

18.2 For each race weekend the following applies:

(a) When fewer than 5 races have been completed, a boat's series score will be the total of her race scores.

(b) When 5 or more races have been completed, a boat's series score will be the total of her race scores excluding her worst score.

18.3 Rule A5.3 applies

18.4 For the overall results the following applies:

A boat's series score is:

If 20 or more races have been completed, her 3 worst scores will be excluded.

If 15 or more races have been completed, her 2 worst scores will be excluded.

If 10 or more races have been completed, her worst score will be excluded.

19 SAFETY REGULATIONS

19.1 [DP] A boat that retires from a race shall notify the race committee at the first reasonable opportunity.

20 REPLACEMENT OF CREW OR EQUIPMENT

20.1 [DP] Substitution of competitors is not allowed without prior written approval of the race committee.

20.2 [DP] Substitution of damaged or lost equipment is not allowed unless authorized in writing by the race committee. Requests for substitution shall be made to the committee at the first reasonable opportunity, which may be after the race.

21 EQUIPMENT AND MEASUREMENT CHECKS

21.1 [DP] When instructed by a race official on the water, a boat shall proceed to a designated area for inspection.

22 SPARE

23 OFFICIAL VESSELS

23.1 Official vessels will signal the flag of the WZW or the name of an associated yacht club or an orange flag with the letter C or R.

24 SUPPORT TEAMS

24.1 Team leaders, coaches and other support personnel shall stay outside areas where boats are racing from the time of the preparatory signal to start until all boats have finished or the race committee signals a postponement, general recall or abandonment.

25 TRASH DISPOSAL

25.1 Trash may be placed aboard official or support person vessels.

26 BERTHING

26.1 [DP] Boats shall be kept in their assigned places while in the boat park or harbour.

27 HAUL-OUT RESTRICTIONS

27.1 Keelboats shall not be hauled out between the races of a series, except with and according to the terms of prior written permission of the race committee.

28 DIVING EQUIPMENT AND PLASTIC POOLS

28.1 Underwater breathing apparatus and plastic pools or their equivalent shall not be used around keelboats between the preparatory signal of the first race and the end of the last race of the event.

28.2 Keelboats shall not be cleaned below the waterline by any means during the event.

29 PRIZES

29.1 For each series, prizes will be awarded to:

Each member of the crews placing first, second and third.

Further an overall prize in the Dragon class will be awarded for the three Grand Prix d'Aalsmeer series and for the runner up. The overall winner will receive the "Cor Groot wisselprijs" and will have this for one year. This prize remains the property of the NDC.

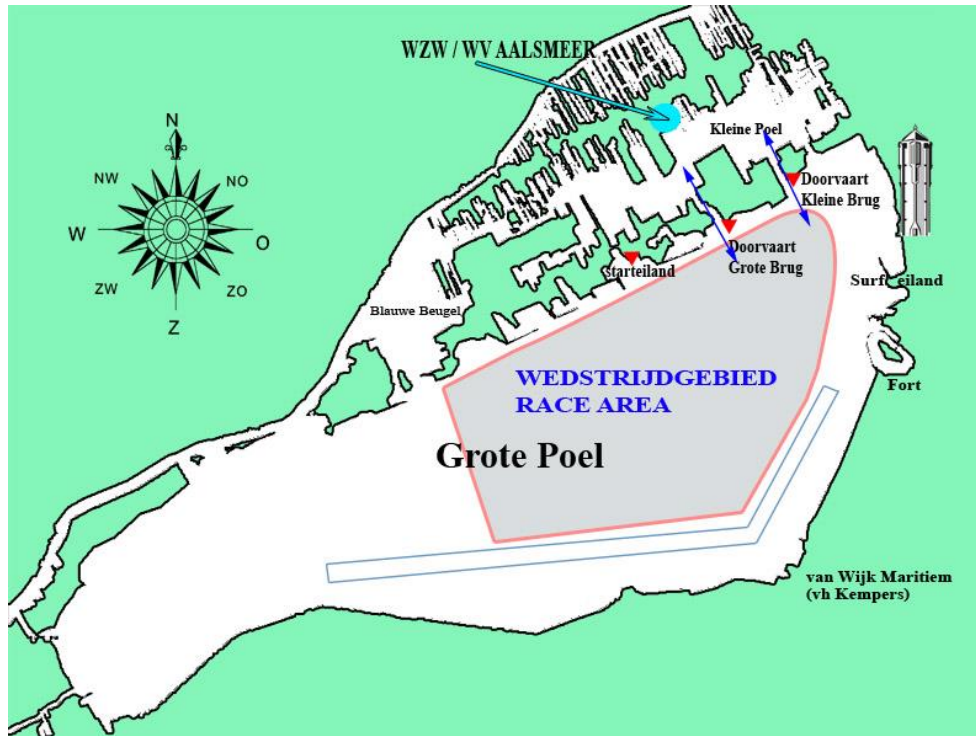
30 RISK STATEMENT

30.1 RRS 3 states: 'The responsibility for a boat's decision to participate in a race or to continue to race is hers alone.' By participating in this event each competitor agrees and acknowledges that sailing is a potentially dangerous activity with inherent risks. These risks include strong winds and rough seas, sudden changes in weather, failure of equipment, boat handling errors, poor seamanship by other boats, loss of balance on an unstable platform and fatigue resulting in increased risk of injury. Inherent in the sport of sailing is the risk of permanent, catastrophic injury or death by drowning, trauma, hypothermia or other causes.

31 INSURANCE

31.1 Each participating boat shall be insured with valid third-party liability insurance with a minimum cover of € 1.500.000 per incident or the equivalent.

ADDENDUM A



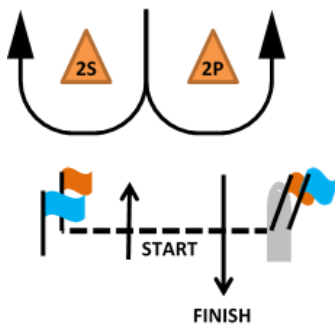
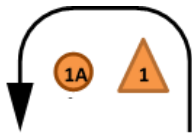
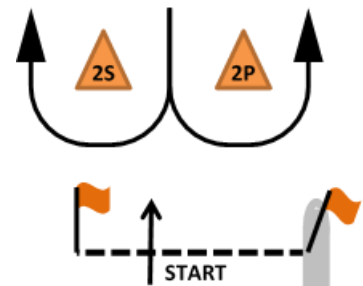
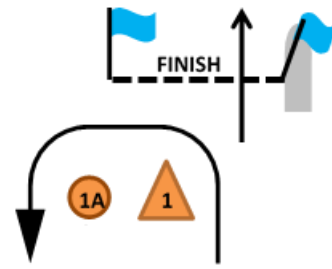
ADDENDUM B

Course A: Start – 1 – 1A – 2P/2S – Finish
 Course B: Start – 1 – 1A – 2P/2S – 1 – 1A – 2P/2S - Finish
 Course C: Start – 1 – 1A – 2P/2S – 1 – 1A – 2P/2S – 1 – 1A – 2P/2S
 - Finish

Marks 1, 1A and 2P to be left on port side. Mark 2S on starboard side.

The course sign is a black letter on a yellow background.

Please note that the marks of the gate will consist of two buoys, if one is missing the remaining buoy must be left to port.



Course D: Start – 1 – 1A – 2P/2S – 1 – 1A - Finish
 Course E: Start – 1 – 1A – 2P/2S – 1 – 1A – 2P/2S – 1 – 1A - Finish
 Course F: Start – 1 – 1A – 2P/2S – 1 – 1A – 2P/2S – 1 – 1A – 2P/2S
 – 1 – 1A - Finish

Marks 1, 1A and 2P to be left on port side. Mark 2S on starboard side.

The course sign is a black letter on a yellow background.

Please note that the marks of the gate will consist of two buoys, if one is missing the remaining buoy must be left to port.

ADDENDUM C

Sailing Conditions / Guidelines

Warning Signal

1. The warning signal should not be made if the wind speed in a substantial part of the racing area is below 5 knots or above 25 knots for a period of at least 5 minutes before the warning signal.
2. The warning signal should not be made if wind speeds above 25 knots are expected or have been forecast for the racing area during the time of the race.

Abandoning Races

1. A race should be abandoned if the wind speed drops below 2 knots in a substantial part of the racing area for a period of 5 minutes or more.
2. A race should be abandoned once the sustained wind speed reaches or exceeds 30 knots at any time before the first boat has crossed the finishing line.
3. A race should be abandoned if a wind shift of more than 25 degrees occurs before the first boat arrives at the first windward mark.
4. A race should be abandoned if it is thought that less than 30% of the Fleet will finish within the time limit.