



SAILING INSTRUCTIONS

2021 Open Dutch Championship

Dragon Class

**Organized by the Koninklijke Zeil- en Roeivereniging "Hollandia" (RYC Hollandia)
in conjunction with the Nederlandse Draken Club (Dutch Dragon Association)
under the auspices of the Royal Netherlands Watersports Association (RNWA)**

from 16 to 19 September (inclusive) 2021

location: IJsselmeer off Medemblik, the Netherlands

The notation '[NP]' in a rule means that a boat may not protest another boat for breaking that rule. This changes RRS 60.1(a).

1 RULES

- 1.1 The event is governed by the rules as defined in *The Racing Rules of Sailing* (RRS).
- 1.2 All competitors and support persons must adhere to the corona rules of the Dutch government. For these rules see <https://www.government.nl/topics/coronavirus-covid-19>
- 1.3 [DP] Competitors and support persons shall comply with any reasonable request from an event official. Failure to comply may be misconduct. Reasonable actions by event officials to implement COVID-19 guidance, protocols or legislation, even if they later prove to have been unnecessary, are not improper actions or omissions.

- 1.4 Under RRS 87, in addition to rule 11.11 of the International Dragon Class Rules, the race committee may communicate relevant information to competitors via VHF radio, channel 72. However, the Racing Rules Signals will prevail.

2 CHANGES TO SAILING INSTRUCTIONS

- 2.1 Any change to the sailing instructions will be posted before 09:00 on the day it will take effect, except that any change to the schedule of races will be posted by 20:00 on the day before it will take effect.
- 2.2 Changes to the sailing instructions may also be posted on the website www.dragonclass.nl.

3 COMMUNICATION WITH COMPETITORS

- 3.1 Notices to competitors will be posted on the official notice board located near the entrance of the race office.
- 3.2 The race office is located at the Regatta Center Medemblik.
- 3.3 On the water, the race committee will make courtesy broadcasts to competitors on VHF radio, channel 72.

4 [DP] CODE OF CONDUCT

- 4.1 Competitors and support persons shall comply with reasonable requests from race officials.
- 4.2 Competitors and support persons shall handle any equipment or place advertising provided by the organizing authority with care, seamanship, in accordance with any instructions for its use and without interfering with its functionality.

5 SIGNALS MADE ASHORE

- 5.1 Signals ashore will be displayed at the flag pole near the race office.
- 5.2 When flag AP is displayed ashore, '1 minute' is replaced with 'not less than 60 minutes' in the race signal AP.

6 SCHEDULE OF RACES AND EVENTS

6.1 Sailing

Thursday September 16	12:00	Warning signal race 1
	a.s.a.p.	Warning signal race 2
Friday September 17	11:00	Warning signal race 3
	a.s.a.p.	Warning signal race 4
Saturday September 18	11:00	Warning signal race 5
	a.s.a.p.	Warning signal race 6
Sunday September 19	11:00	Warning signal race 7

a.s.a.p. = races will start as soon as practicable at the discretion of the race committee.

6.2 Seven races are scheduled. One extra race per day may be sailed, provided that no race becomes more than one race ahead of schedule and the change is made according to SI 2.1.

6.3 The scheduled time of the warning signal for the first race each day is 11:00 hrs, except for Thursday September 6th. The scheduled time on that day is 12:00 hrs.

6.4 To alert boats that a race or sequence of races will begin soon, the orange starting line flag will be displayed with one sound at least five minutes before a warning signal is made.

6.5 On the last scheduled day of racing no warning signal will be made after 15:00.

7 CLASS FLAG

The Class flag will be code flag D.

8 RACING AREA

SI Addendum A shows the approximate location of the racing area.

9 COURSES

9.1 The diagram in SI Addendum B shows the course, including the approximate angles between legs, the order in which marks are to be passed and the side on which each mark is to be left.

9.2 The approximate distance from the midpoint of the starting line to mark 1 will be 1.4-2.4 Nm. Mark 2 will be laid at a distance of approximately 180 meters and at an angle of

approximately 70 degrees to the wind from mark 1.

9.3 No later than the warning signal, the approximate compass bearing of the first leg will be displayed on the race committee signal vessel.

9.4 The course will not be shortened. This changes RRS 32.

10 MARKS

10.1 Marks 1, 2, 3S and 3P are orange inflatable cylindrical shapes.

10.2 New marks as provided in SI 13.1 will be yellow inflatable cylindrical shapes.

10.3 The port-end starting mark is a dan buoy displaying an orange flag. The starboard-end starting mark is the race committee signal vessel displaying an orange flag.

10.4 The port-end finishing mark is a dan buoy displaying a blue flag. The starboard-end finishing mark is a race committee vessel displaying a blue flag.

10.5 A race committee vessel signalling a change of a leg of the course is a mark as provided in SI 13.2.

11 OBSTRUCTIONS

There are no obstructions in the racing area.

12 THE START

12.1 Races will be started by using RRS 26 with the warning signal made five (5) minutes before the starting signal.

12.2 The starting line is between staffs displaying orange flags on the starting marks.

12.3 If any part of a boat's hull is on the course side of the starting line during the two minutes before her starting signal and she is identified, the race committee will attempt to broadcast her sail number on VHF channel 72. Failure to make a broadcast or to time it accurately will not be grounds for a request for redress. This changes RRS 62.1(a).

12.4 A boat that does not start within ten (10) minutes after her starting signal will be scored Did Not Start without a hearing. This changes RRS A5.1 and A5.2.

13 CHANGE OF THE NEXT LEG OF THE COURSE

13.1 To change the next leg of the course, the race committee will move the original mark or

move the finishing line to a new position. If the race committee decides to lay a new mark and remove the original mark as soon as practicable, flag C will be displayed over a yellow flag. This changes RRS 33(a). When in a subsequent change a new mark is replaced, it will be replaced by an original mark.

- 13.2 Except at a gate, boats shall pass between the race committee vessel signalling the change of the next leg and the nearby mark, leaving the mark to port and the race committee vessel to starboard. This changes RRS 28.

14 FINISH

The finishing line is between staffs displaying blue flags on the finishing marks.

15 TIME LIMITS AND TARGET TIMES

- 15.1 The Mark 1 Time Limit, Race Time Limit (see RRS35), the finishing window and the Target Time are shown in the table below:

Mark 1 Time Limit	Race Time Limit	Finishing Window	Target Time
45 minutes	150 minutes	30 minutes	90 minutes

- 15.2 If no boat has passed Mark 1 within the Mark 1 Time limit the race will be abandoned.
- 15.3 The Finishing Window is the time for boats to finish after the first boat sails the course and finishes. Boats failing to finish within the Finishing Window, and not subsequent retiring, penalized or given redress, will be scored Time Limit Expired (TLE) without a hearing. A boat scored TLE shall be scored points for the finishing place one more than the points scored by the last boat that finished within the Finishing Window. This changes RRS 35, A5.1, A5.2 and A10.
- 15.4 Failure to meet the target time will not be grounds for redress. This changes RRS 62

16 HEARING REQUESTS

- 16.1 The protest time limit is 90 minutes after the last boat finishes the last race of the day or the race committee signals no more racing today, whichever is later. The time will be posted on the official notice board.
- 16.2 Hearing request forms are available from the race office.
- 16.3 Notices will be posted no later than 30 minutes after the protest time limit to inform competitors of hearings in which they are parties or named as witnesses. Hearings will be held in the protest room, located at the race office, beginning at the time posted.

17 [NP] [DP] SAFETY REGULATIONS

- 17.1 Each racing day, before the warning signal of the first race of that day, each boat shall pass on the starboard side of the race committee signal vessel and have her sail number orally acknowledged by the race committee.
- 17.2 A boat that retires from a race or decides not to start, shall notify the race committee as soon as possible before leaving the race area, and shall notify the race office at once on coming ashore.
- 17.3 A boat not leaving the harbour for a day's race shall inform the race office prior to the first warning signal of that day.

18 REPLACEMENT OF CREW OR EQUIPMENT

- 18.1 Substitution of competitors will not be allowed without prior written approval of the race committee. Replacement of the responsible person is not allowed.
- 18.2 Substitution of damaged or lost equipment will not be allowed unless approved by the race committee. Requests for substitution shall be made to the committee at the first reasonable opportunity, which may be after the race.

19 EQUIPMENT CHECKS AND MEASUREMENT CHECKS

- 19.1 A boat or equipment may be inspected at any time for compliance with the class rules, notice of race and sailing instructions.
- 19.2 [DP] When instructed by a race official on the water, a boat shall proceed to a designated area for inspection.

20 OFFICIAL VESSELS

Official vessels will be identified as follows:

- a. The race committee signal vessel and the finishing vessel will fly a white flag with the letters "RC" in red and they will fly a blue flag with the RYC Hollandia club insignia as well.
- b. Orange rigid inflatable boats of the race committee are marked 'rescue' on both tubes and will carry a grey outboard cover with the RYC Hollandia club insignia.

21 [DP] SUPPORT TEAMS

- 21.1 Support teams, including all support persons and support person vessels are allowed to be in the racing area.
- 21.2 Except in case of emergency, team leaders, coaches and other support persons shall stay outside areas where boats are racing from the time of the preparatory signal for the first start until all boats have finished or retired or the race committee signals a postponement, general recall or abandonment.
- 21.3 Support person vessels shall be marked with a conspicuously displayed flag of the country they represent, with a minimum height of 200 mm.
- 21.4 Support teams should be prepared to offer assistance to competing boats if requested to do so by the race committee.

22 TRASH DISPOSAL

Trash may be placed aboard official or support person boats.

23 ORGANISATION

Race officer: John Borsboom

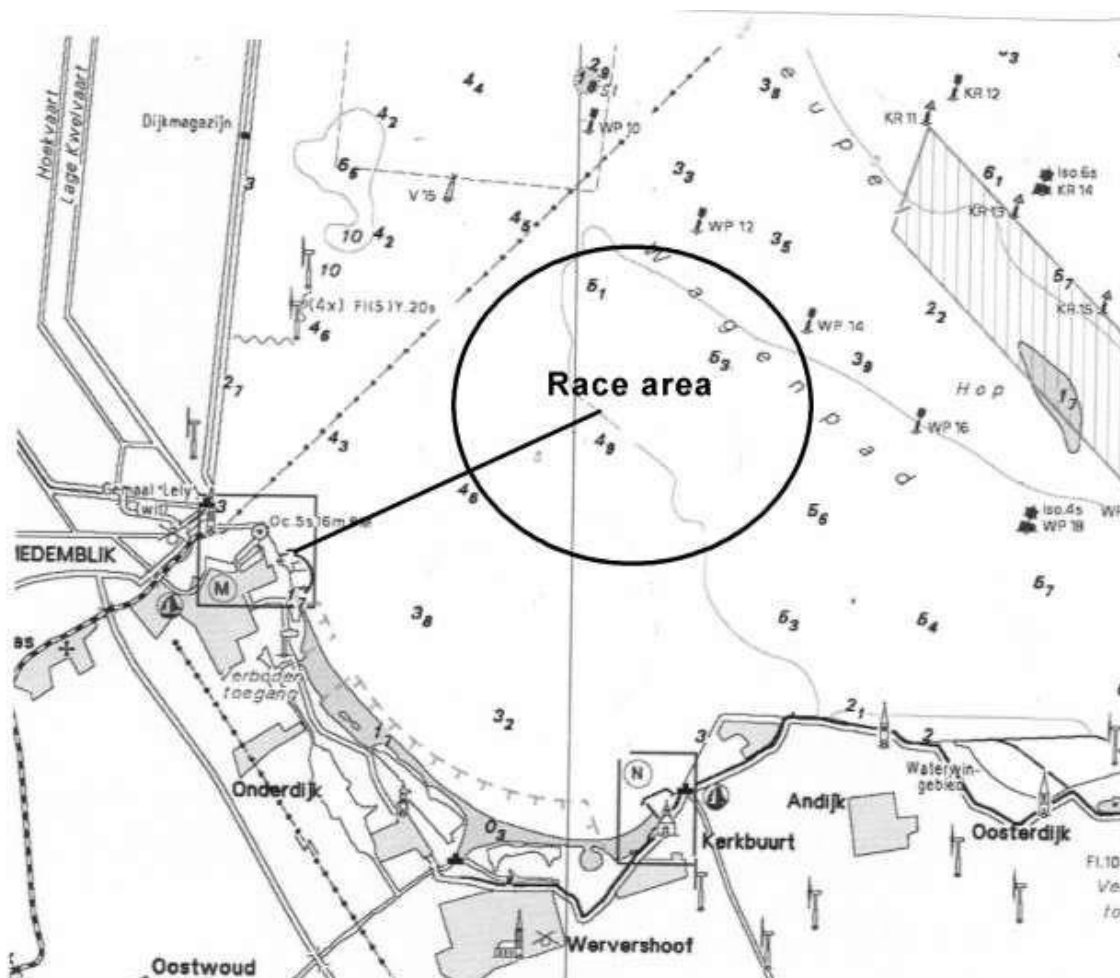
Chairman protest committee: Nicole de By

Chairman technical committee: tba

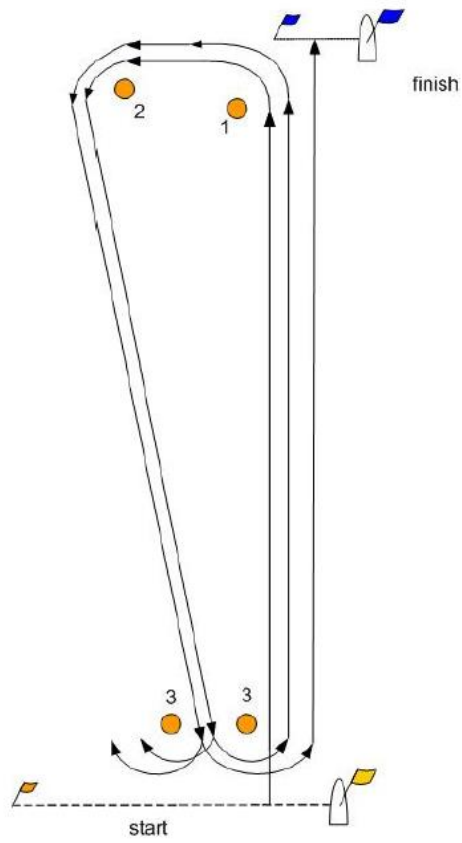
APPROXIMATE POSITION RACING AREA

Distance from regatta center to middle point racing area approximately 1,6 Nm.

Bearing: 070.



Course Diagram



Start-1-2-3(gate)-1-2-3(gate)-finish